



WHY IS IT IMPORTANT TO MAINTAIN CLEAN SOLAR PANELS?

A clean panel will provide optimum energy output. Soiled panels can reduce energy output anywhere from 2% to 40%.

WHAT COMMON PITFALLS SHOULD YOU AVOID?

Do not clean the panels when the surface is hot; avoid direct sunlight. The best time to clean is early in the morning or late in the evening.

Do not use metal, hard or abrasive methods such as scouring powder, steel wool, scrapers, blades, and other sharp instruments.

Avoid using power washers; instead, normal pressure from a standard residential hose and faucet is recommended.

Do not touch or walk on the solar panels.

WHAT SHOULD YOU USE TO CLEAN SOLAR PANELS?

Most manufacturers recommend using a soft cloth or brush with clean water.

THE PRO-CURVE SOLAR PANEL CLEANING KIT CONTAINS:



| ITEM | DESCRIPTION | SIZE | METRIC SIZE |
|---|--|---------|-------------|
| MODEL 1008 APPROXIMATE REACH 13' (4.0 m) | | | |
| 3108 | PRO-CURVE 2 SECTION POLE | 5'-8' | (1.5-2.4 m) |
| MODEL 1009 APPROXIMATE REACH 17' (5.0 m) | | | |
| 3412 | PRO-CURVE 3 SECTION POLE | 5'-12' | (1.5-3.5 m) |
| BOTH KITS CONTAIN: | | | |
| 8508 | HYDRASOAR FLOW-THRU POLE | 4'-8' | (1.2-2.4 m) |
| 0405 | SOFT FLOW-THRU BRUSH | 10" | (25 cm) |
| 0425 | FLOW-THRU ANGLE ADAPTOR | | |
| 1812 | CHANNEL W/PREMIUM RUBBER | 12" | (30 cm) |
| 1818 | CHANNEL W/PREMIUM RUBBER | 18" | (45 cm) |
| 1025 | PRO-CURVE SQUEEGEE/WASHER HANDLE | | |
| 1025 | PRO-CURVE SQUEEGEE/WASHER HANDLE | | |
| 0718 | DELUXE WASH SLEEVE | 18" | (45 cm) |
| 0318 | WASH SLEEVE SUPPORT BAR | 18" | (45 cm) |
| 0722 | DELUXE WASH SLEEVE | 22" | (56 cm) |
| 0322 | WASH SLEEVE SUPPORT BAR | 22" | (56 cm) |
| 0735 | MICROFIBER CLEANING CLOTH | 15"x15" | (38x38 cm) |
| 10089IS | PRO-CURVE INSTRUCTIONS | | |
| 0000 | CANVAS CASE WITH ZIPPER POCKET & SHOULDER STRAPS | 4' | (1.2 m) |
| 0000 | PRO-CURVE DVD | | |

REORDER SÖRBO 3X4 SQUEEGEES AND PREMIUM SÖRBO 3X4 SQUEEGEE RUBBER THROUGH:

Sörbo Products, Inc., USA
 Ph: 760-202-4003/ Fax: 760-202-3003
 Sörbo Australia, Edco, Pty Ltd.
 Ph: 61-02-9557 4411/ Fax: 61 02-9519 9223

FOR ADDITIONAL INFORMATION,
 CALL TOLL FREE: 1-800-821-3508

MR. LONGARM, INC.

GREENWOOD, MO U.S.A. 64034
 (816) 537-6777 • FAX: 816-537-6162

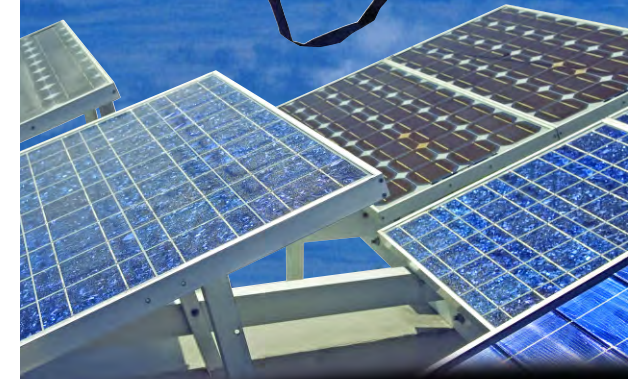
solar@mrlongarm.com

10089IS 1M 11/2009

ProCurve Solar

SOLAR PANEL CLEANING KIT INSTRUCTIONS

IMPORTANT USER INFORMATION.
 PLEASE READ BEFORE USING

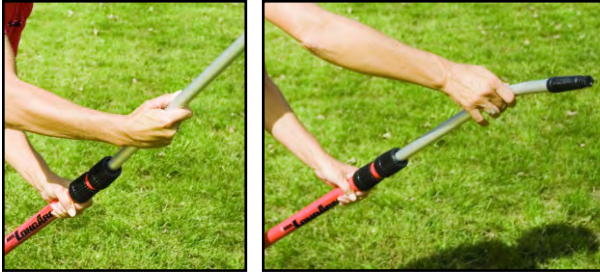


MR. LONGARM
 Finish. Up.

USING THE PROCURVE WASH SLEEVE & SQUEEGEE SYSTEM

PREPARE THE TOOLS BEFORE BEGINNING THE JOB

- 1) Assemble the ProCurve extension pole by loosening the "chuck" and installing the curved slider tube into the handle.



- 2) Assemble the ProCurve washer by inserting either the 18" or 22" wash sleeve onto the wash sleeve bar, be sure to slip the bar through the elastic band inside the sleeve. Snap the sleeve shut.



- 3) Insert the wash bar and sleeve into the ProCurve Tool Handle then screw the star knob to secure.

- 4) Assemble the ProCurve squeegee by inserting either the 12" or 18" squeegee channel with rubber into the other ProCurve Tool Handle, center the channel, then secure the channel firmly by screwing the knob.



- 5) Dip the washer into clean water and squeeze excess water off the wash sleeve.

- 6) Attach the ProCurve washer onto the end of the

ProCurve pole. You will hear a "click" when it is securely attached. The Tool Handle will have a secure fit and not fall off when using, yet will swivel on the end of the pole allowing flexibility to rotate the wash sleeve when cleaning.

- 7) Extend the ProCurve pole to the desired length.



- 8) Mop the surface of the panel using back and forth or side to side motions. You can either allow the panel to air dry, or squeegee the excess water off of the surface.



- 9) To use the squeegee, remove the ProCurve Tool Handle with the wash sleeve by pulling off of the pole, then attach the ProCurve squeegee.

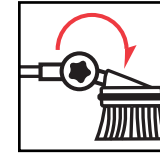


- 10) Squeegee the surface of the solar panel. **Be sure to angle the pole and squeegee handle to ensure that only the rubber is touching the panel surface.** You can squeegee from top to bottom, or side to side.

USING THE HYDRASOAR

- 1) Attach the brush head onto the flow-through adaptor.

- 2) Screw the brush/adaptor onto the threaded end of the HydraSoar pole.



- 3) Adjust the angle of the brush accordingly.



- 4) Attach a garden hose to the HydraSoar pole (use the quick connect European hose adaptor if applicable) and turn on the water source.

- 5) You can adjust the water flow using the water flow valve attachment on the HydraSoar hose connector.



- 6) Start by rinsing the surface of the panel, then with the brush, apply light pressure using a scrubbing motion.



- 7) Rinse the surface after brushing.

- 8) You can either allow the panel to air dry or squeegee the excess water off the surface.